



Sizes  
RHL 0



Weight  
0.0085 kg



Gripping moment  
0.014 Nm

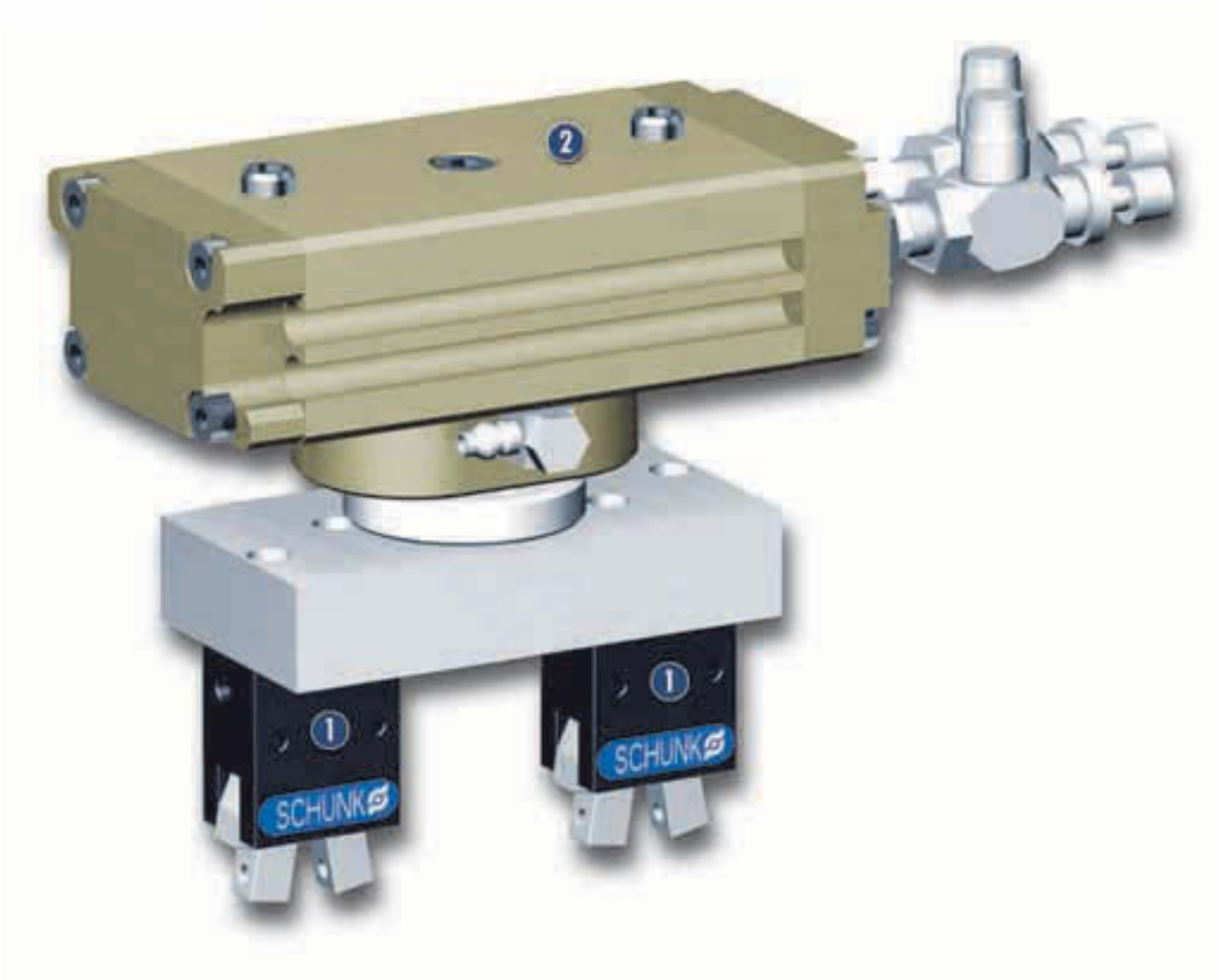


Opening angle per finger  
10°



Workpiece weight  
0.018 kg

### Application example



Transfer unit for small components in the production of circuit boards

① RHL 0  
2-Finger Angular Gripper

② MRU 8.2-E-0  
Miniature Rotary Unit

## Angular Gripper for small components

The RHL 0 series is a low-price 2-finger angular gripper, which is particularly suitable for simple applications.

### Area of application

For use in clean environmental conditions (e.g. assembly or packaging zones) with low process forces.

### Your advantages and benefits

#### Low-price gripper series

for simple applications with low loads in clean environments

#### Maintenance-free

with low weight

#### Excellent price-performance ratio

making it an attractive option for low-budget applications



### Information about the series

#### Working principle

Double-acting pneumatic drive

#### Housing material

Aluminum/steel

#### Base jaw material

Aluminum/steel

#### Actuation

Pneumatic, with filtered compressed air (10 µm): Dry, lubricated or non-lubricated

Pressure medium: Required quality class of compressed air according to DIN ISO

8573-1: Quality class 4

#### Warranty

24 months

#### Scope of delivery

Includes small parts for mounting, assembly and operating manual with manufacturer's declaration



## Function description

The angular gripper for small components works pneumatically, the kinematics produce a rotating gripper movement.

## Options and special information

In order to keep the manufacturing costs and thus the sale prices low, the RH series offers a simple design. It is designed for low-cost production. Therefore, repairs are generally not economically feasible.

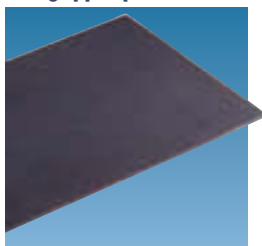
## Accessories

SCHUNK accessories – the suitable complement for the highest level of functionality, reliability and controlled production of all automation modules.

### Fittings



### HKI gripper pads



### SDV-P pressure maintenance valves



① For the exact size of the required accessories, availability of this size and the designation and ID, please refer to the additional views at the end of the size in question. You can find more detailed information on our accessory range in the "Accessories" catalog section.

## General information on the series

### Gripping force

is the arithmetic total of the gripping force applied to each base jaw at distance P (see illustration), measured from the upper edge of the gripper.

### Gripping moment

The gripping moment is the arithmetic total of gripping moments for each base jaw.

### Finger length

The finger length is measured from the upper edge of the gripper housing in the direction of the main axis.

### Repeat accuracy

is defined as the spread of the limit position after 100 consecutive strokes.

### Workpiece weight

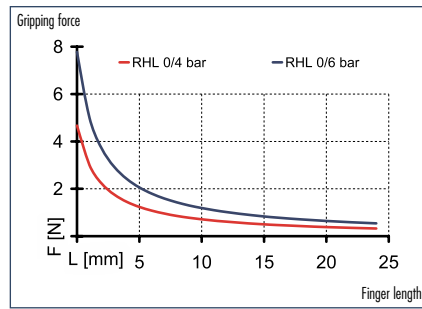
The recommended workpiece weight is calculated for a force-type connection with a coefficient of friction of 0.1 and a safety factor of 2 against slippage of the workpiece on acceleration due to gravity g. Considerably heavier workpiece weights are permitted with form-fit gripping.

### Closing and opening times

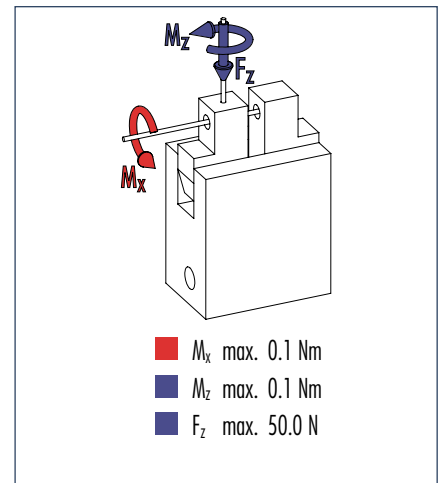
Closing and opening times are purely the times that the base jaws or fingers are in motion. Valve switching times, hose filling times or PLC reaction times are not included in the above times and must be taken into consideration when determining cycle times.



### Gripping force, O.D. gripping



### Finger load

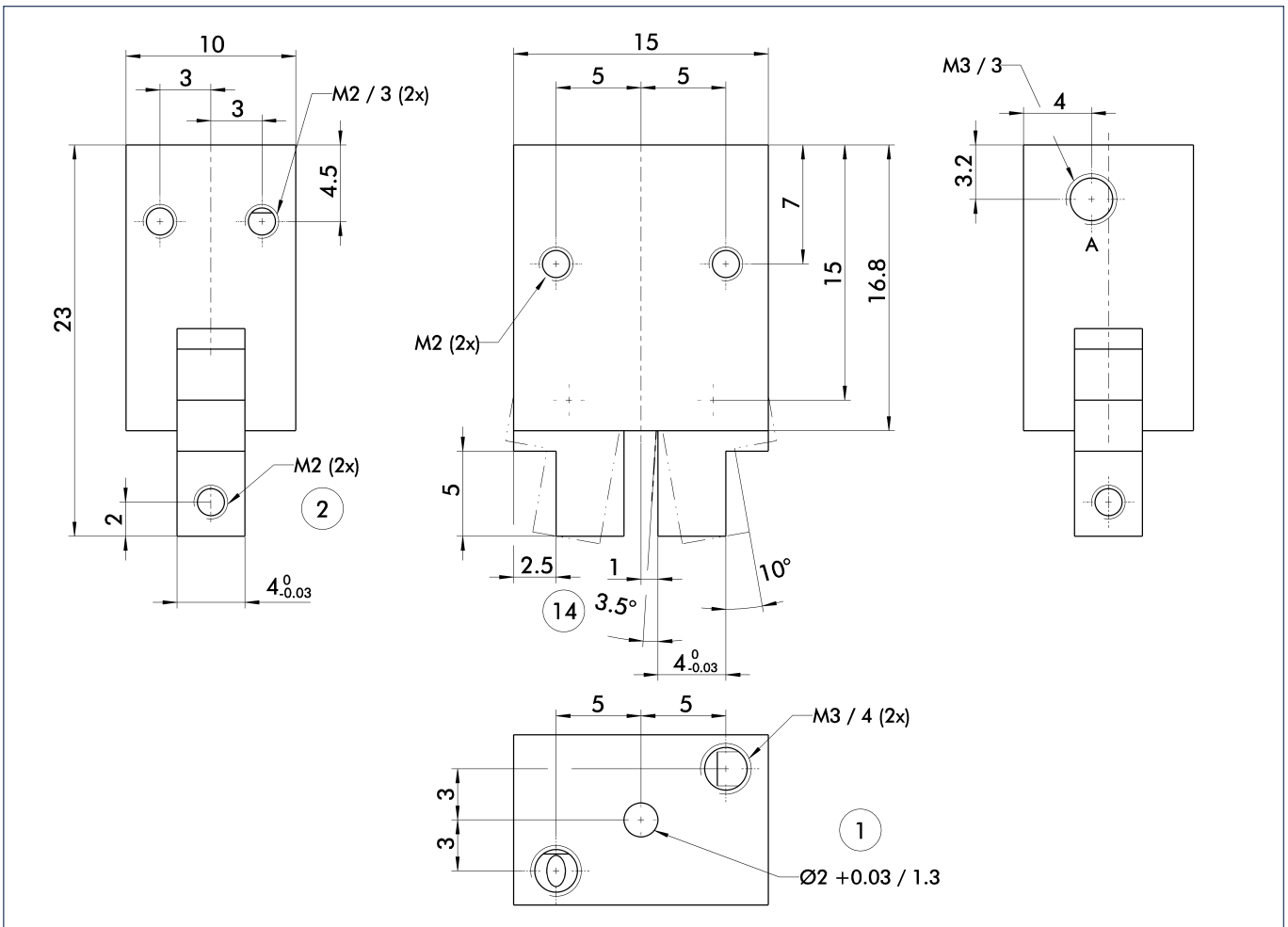


① Moments and forces apply per base jaw and may occur simultaneously. If the max. permitted finger weight is exceeded, it is imperative to throttle the air pressure so that the jaw movement occurs without any hitting or bouncing. Service life may be reduced.

## Technical data

Description		RHL 0
	ID	0360170
Opening angle per jaw	[°]	10.0
Opening angle per jaw up to	[°]	3.5
Closing moment	[Nm]	0.014
Weight	[kg]	0.0085
Recommended workpiece weight	[kg]	0.018
Air consumption per double stroke	[cm <sup>3</sup> ]	0.06
Nominal pressure	[bar]	6.0
Minimum pressure	[bar]	4.0
Maximum pressure	[bar]	6.5
Closing time	[s]	0.1
Opening time	[s]	0.1
Max. permitted finger length	[mm]	16.0
Max. permitted weight per finger	[kg]	0.01
IP class		30
Min. ambient temperature	[°C]	5.0
Max. ambient temperature	[°C]	60.0
Repeat accuracy	[mm]	0.03

### Main views



The drawing shows the gripper in the basic version with closed jaws, the dimensions do not include the options described below.

- A,a Main/direct connection, gripper opening
- ① Gripper connection
- ② Finger connection
- ⑭ Clamping reserve per finger

① The SDV-P pressure maintenance valve can be used as a gripping force safety device (see "Accessories" catalog section).